



**Welcome to the Public Open House for
The City of Vaughan
Stormwater Management Ponds
Site 13, Site 18 & 22, and Site 20**

Project Objective

- ❖ City applied for partial funding from the federal Disaster Mitigation Adaption Fund (DMAF) in 2019
- ❖ 2009 SWM Retrofit Study by Aquafor identified locations with the potential to improve water quality, erosion and flooding
- ❖ The partial funding will be used to add/improve stormwater management infrastructure at key locations surrounding Rainbow Creek and Robinson Creek
- ❖ Proposed infrastructure updates will:
 - Improve storm runoff water quality
 - Improve flood protection

Locations

- ❖ Retrofit **Site 13** from an existing dry pond facility to a wet pond

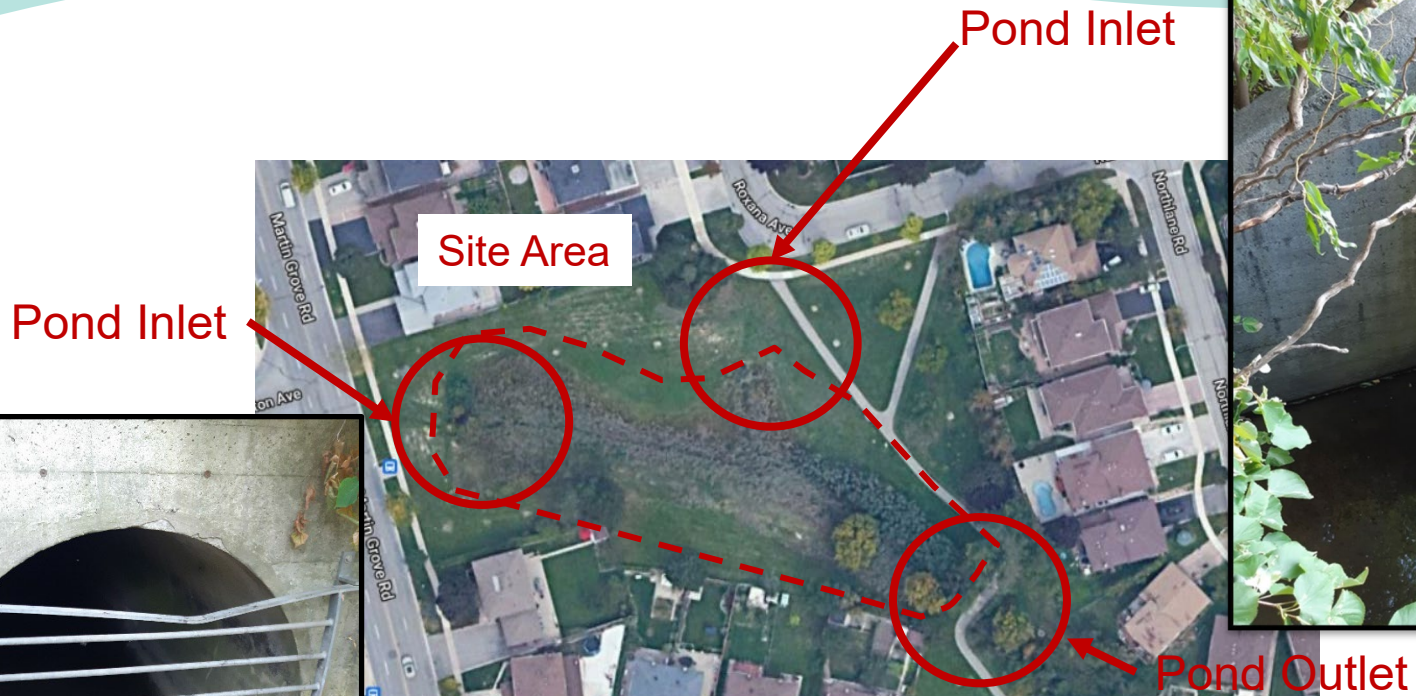


Locations

- ❖ Construct a new wet pond facility at **Site 20** from an existing uncontrolled storm outfall
- ❖ Construct a new wet pond facility at **Site 18 + Site 22** from existing uncontrolled storm outfalls

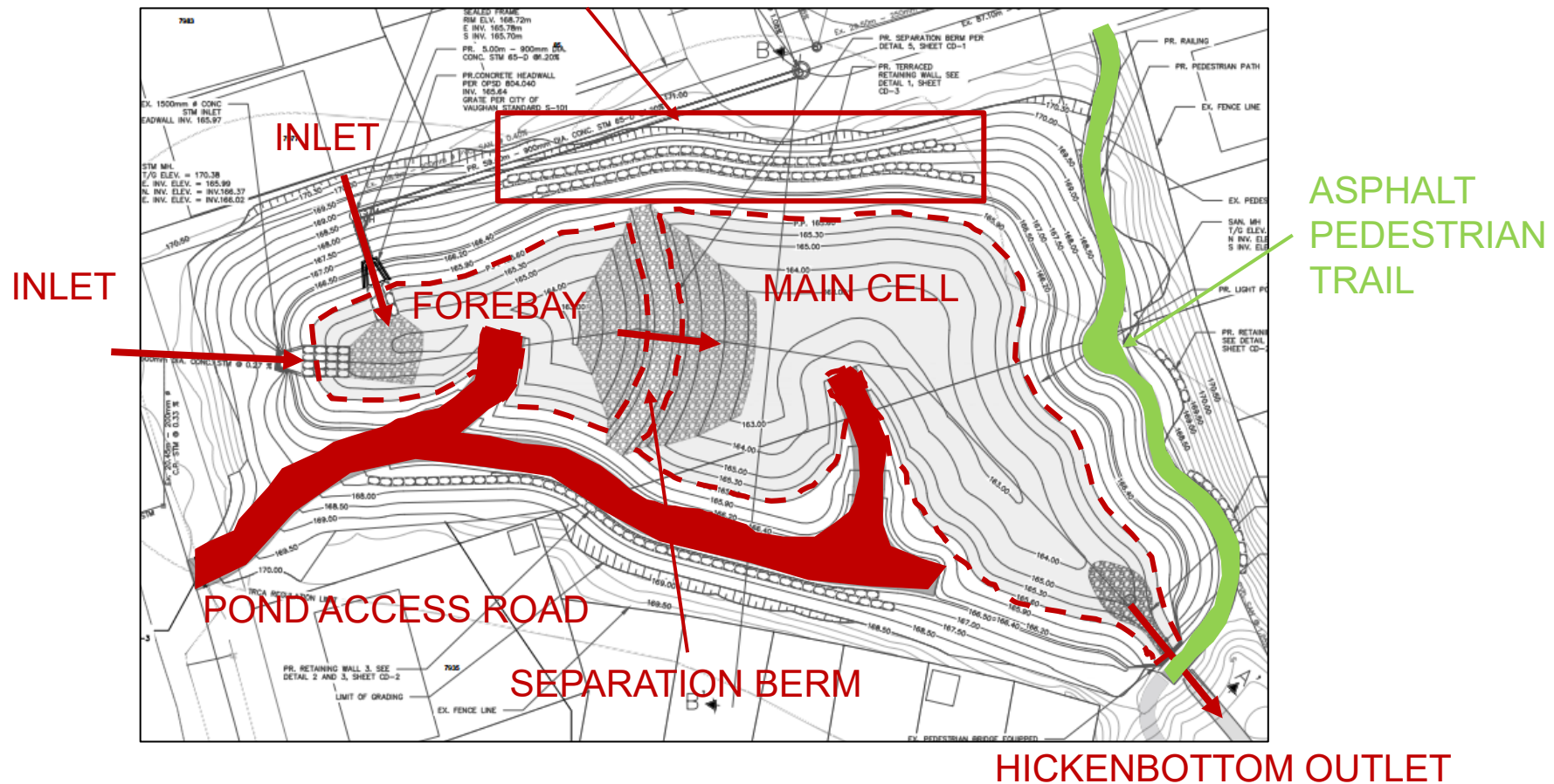


Existing Conditions – Site 13

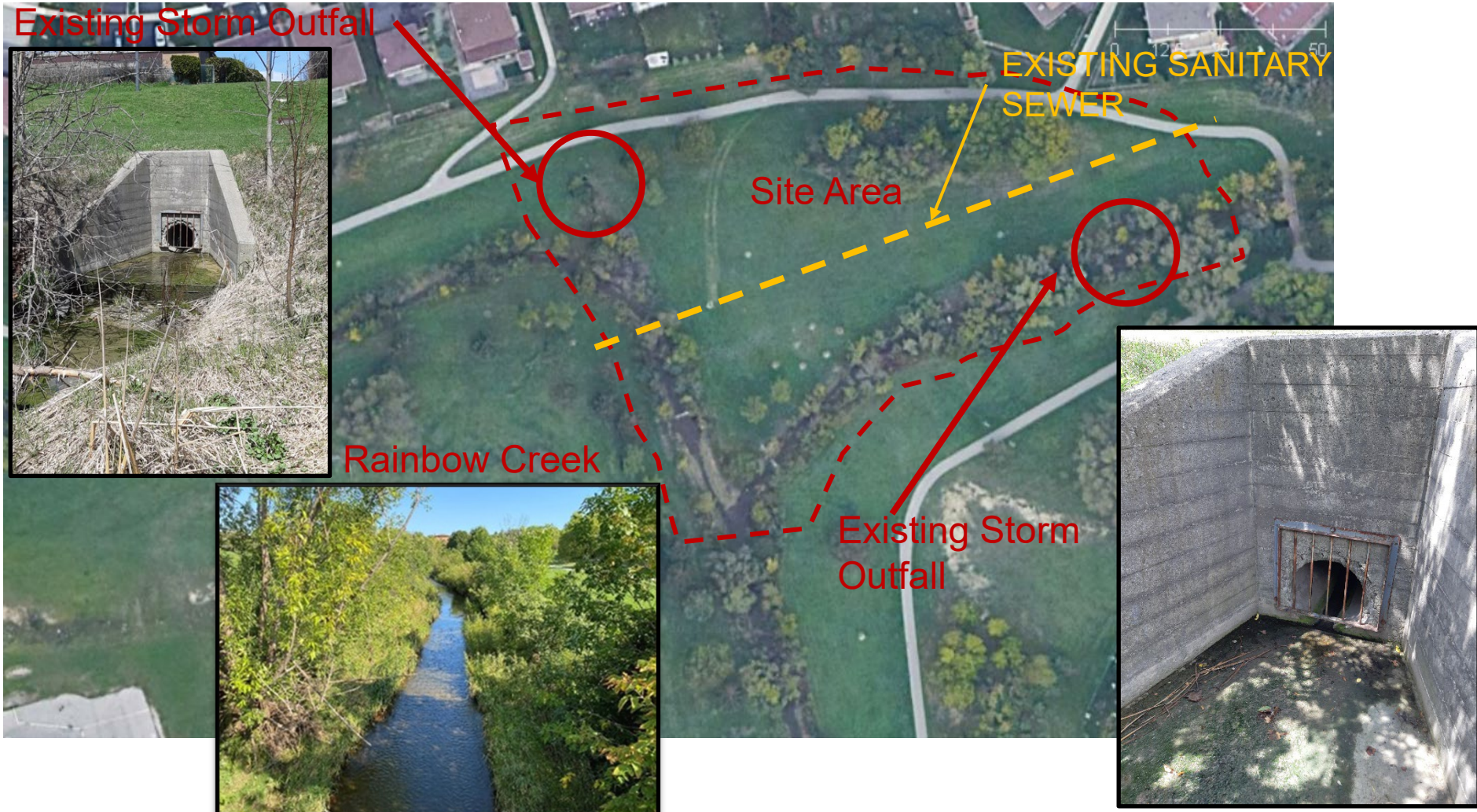


Proposed Works – Site 13

ARMOURSTONE RETAINING WALL



Existing Conditions – Site 18 & 22



Proposed Works – Site 18 & 22

NEW STORM SEWER

ASPHALT PEDESTRIAN TRAIL

POND INLET

ARMOURSTONE
RETAINING WALLS

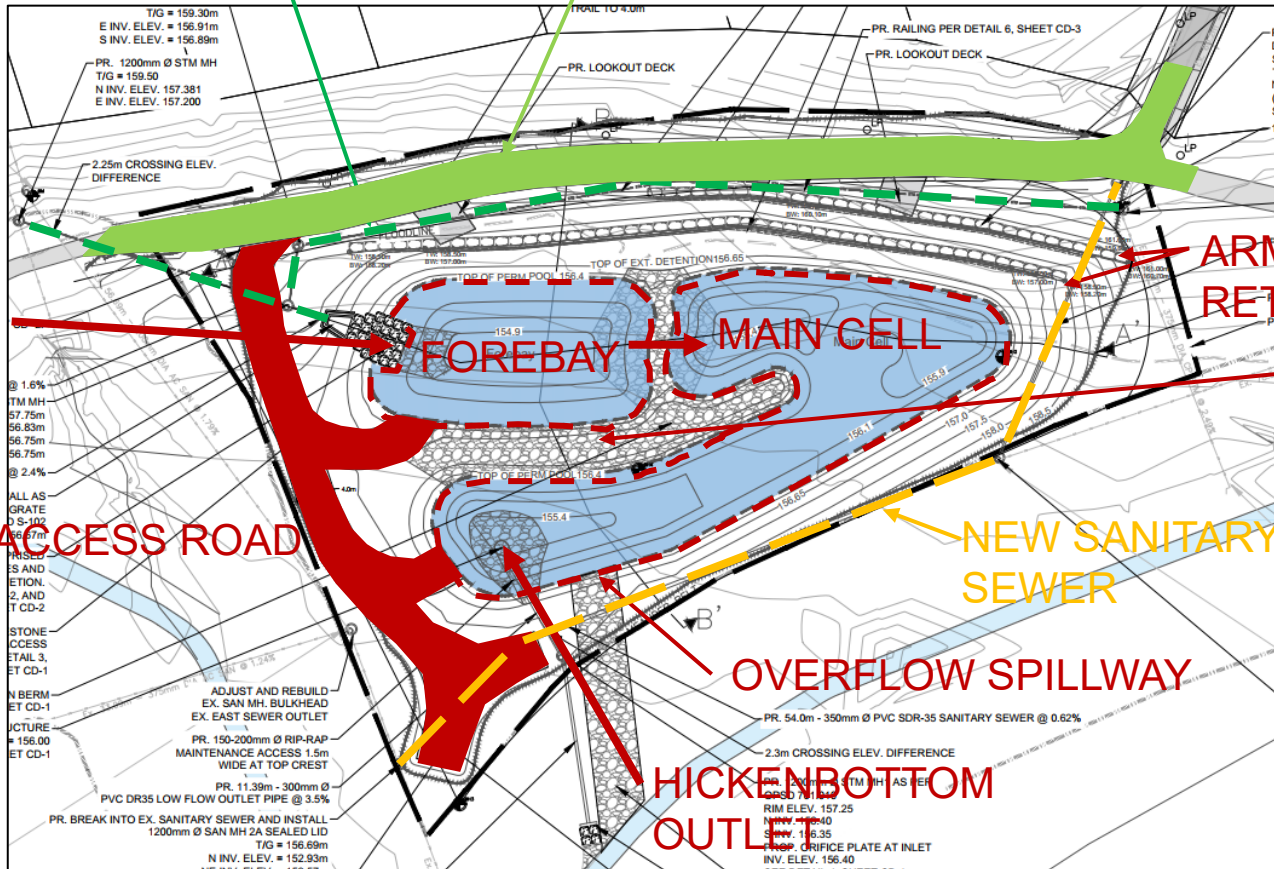
SEPARATION
BERM

POND ACCESS ROAD

NEW SANITARY
SEWER

OVERFLOW SPILLWAY

HICKENBOTTOM
OUTLET



Existing Conditions – Site 20



Scuttiebutt Soccerfield
Temporarily closed



Park Soccer Field



Existing Tennis Court
to be removed

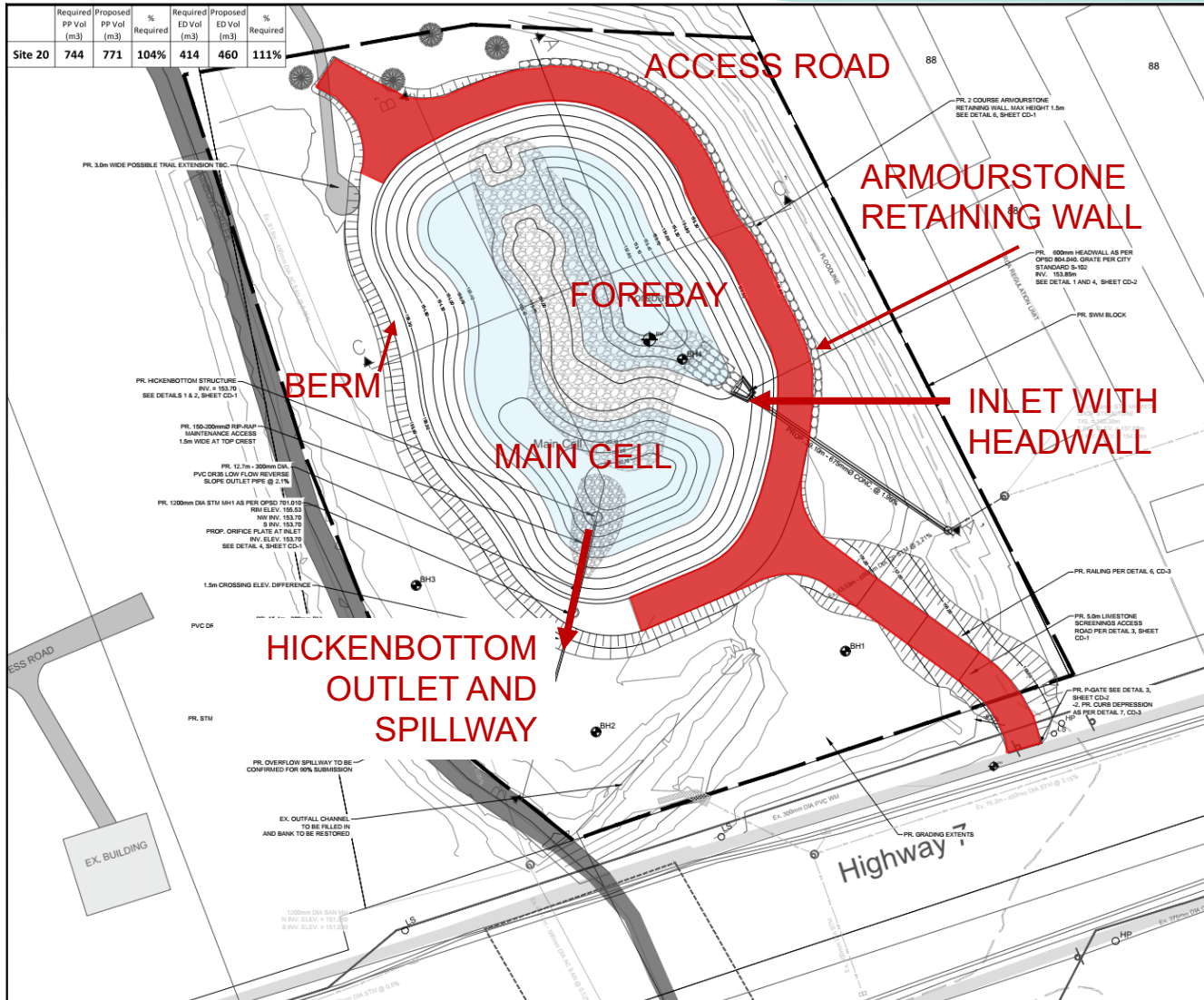
Existing Storm Outfall

Site Area

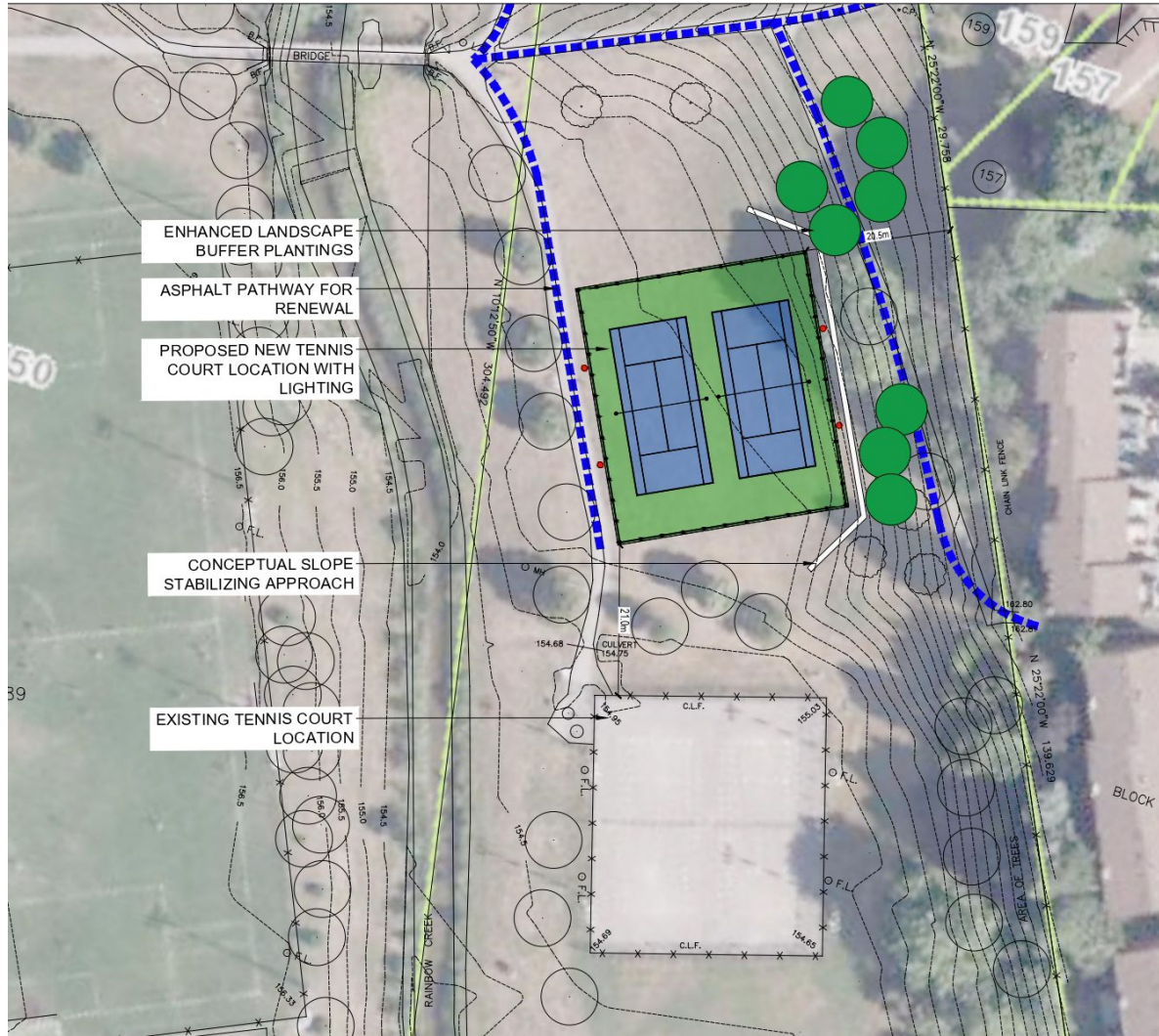
Hwy 7

Hwy 7

Proposed Works – Site 20



Tennis Court Relocation and Renewal

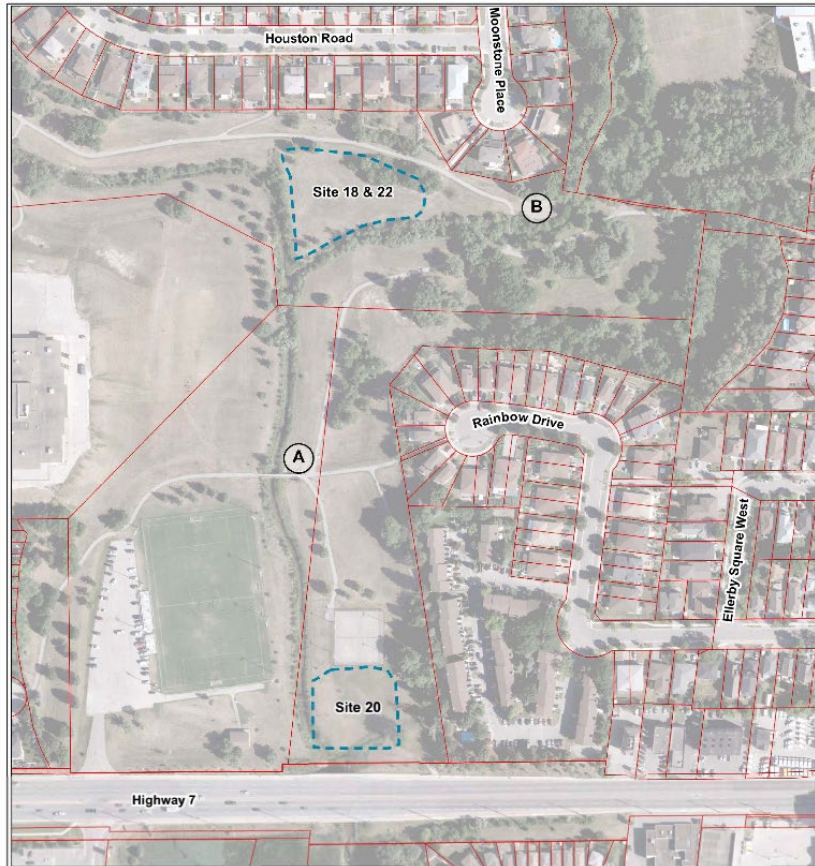


Proposed Tennis Court Location



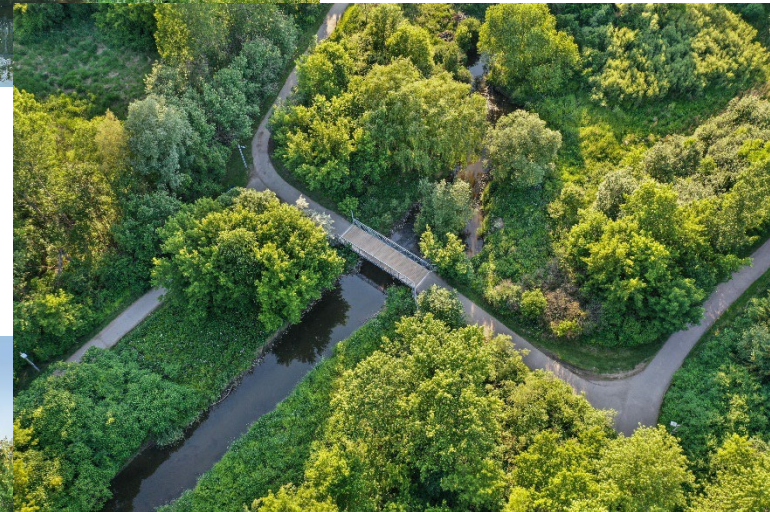
Proposed Bridge Replacement Locations

Location Map



Legend

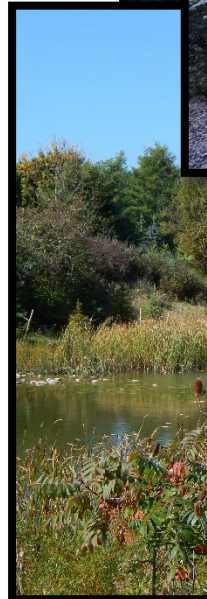
- A St. Peters School Trail Bridge Replacement (Construction in 2023) (BL51_BR002)
- B Moonstone Place Trail Bridge Replacement (Construction in 2023) (BL51_BR004)
- Property Lines
- Disaster Mitigation Adaption Fund Site Locations (Construction in late 2023 / early 2024)



Design Elements

❖ Basic Design Elements

- Excavation
- Plantings
- Armourstone Retaining Walls
- Sewer Realignment
- Operation and Maintenance Features
 - Access Roads
 - New Outlets/Channel



Construction Expectations

- ❖ Noise, Dust, Mud, Vibrations
- ❖ Total truckloads: 200-300 trucks per day during peak hauling times (6-8 weeks, intermittent)
- ❖ Working Hours: M-F, 7am-7pm
- ❖ Pre-construction Inspections of Homes:
 - Third Party inspection of home exterior and interior.
 - Used to confirm if possible damage is cause by construction (i.e. vibration)
 - Inspections are completed as permitted by homeowner
 - Completed for homes within close proximity to site.
- ❖ Closures to trails and sidewalks
- ❖ Tree Removals



Construction Expectations

Site 13 – Wet Pond

Access/Working Limits

- ❖ Main Truck Access from Martin Grove Road
- ❖ Site Access via Martin Grove Road and Triton Ave
- ❖ Construction limited to site area



Construction Expectations

Site 18 & 22 – Wet Pond

Access/Working Limits

- ❖ Main Truck Access from Woodbridge Ave
- ❖ Site Access via Moonstone Place
- ❖ Hwy 7 to Woodbridge via Kipling Ave
- ❖ Construction limited to site area



Construction Expectations

Site 20 – Wet Pond

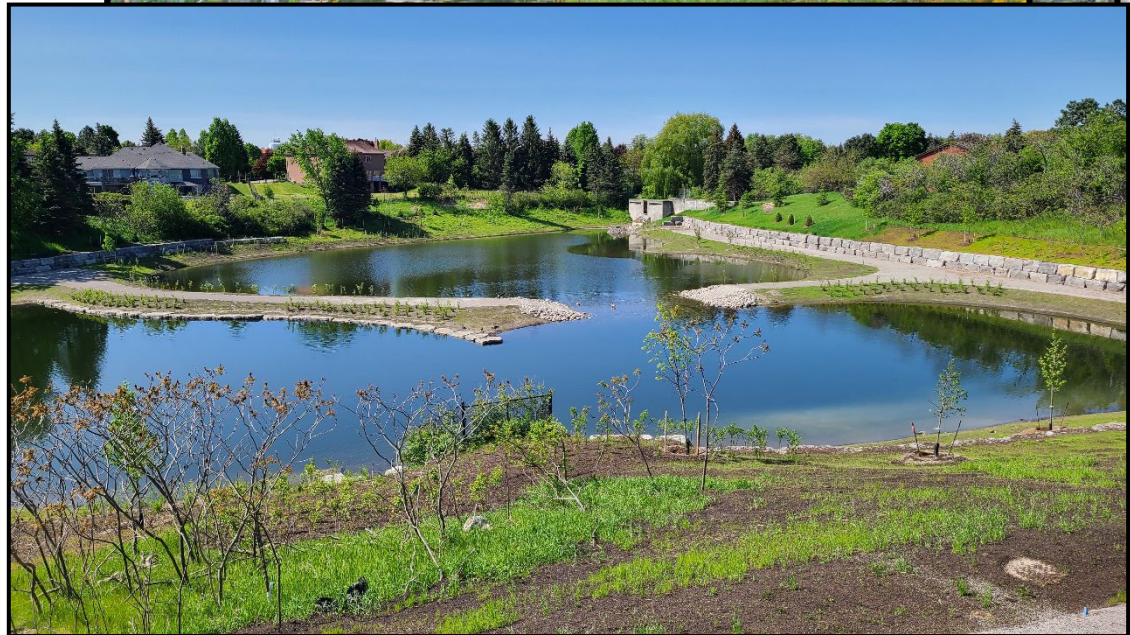
Access/Working Limits

- ❖ Main Truck Access from Hwy 7 and Kipling Ave
- ❖ Site Access via Highway 7
- ❖ Construction limited to site area



Finished Work

- Open Waterbody
- Enhanced Trees/Landscaping
- Decorative Armourstone Wall
- New Hickenbottom Outlet and Spillway
- Access Road
- Pedestrian Trail



Project Duration

❖ General Construction Timing

- **Late Fall 2023 – December 2024**
- **Estimated to take 12-14 months to complete**

❖ Closer to Construction:

- City to provide updated notification on start dates for each area
- Newsletter will be delivered to citizens in the vicinity of the construction and posted to City website

Project Contacts

Alan Manlucu, P.Eng
Project Manager

City of Vaughan
2141 Major Mackenzie Dr.
Vaughan, ON
L6A 1T1

D. (905) 832-8585 ext. 8468
E. Alan.manlucu@vaughan.ca



Will Cowlin, P.Eng.
Project Engineer

Aquafor Beech Ltd.
2600 Skymark Ave, Bldg 6, Suite 202
Mississauga, Ontario
L4W 5B2

D (519) 803-7834
E cowlin.w@aquaforbeech.com

