

**This is a transformative plan
that will create a paradigm shift**



An aerial photograph of a rural landscape. A winding river flows through the center of the image, surrounded by dense green forests and open fields. In the distance, a small town or village is visible, with several buildings and roads. The overall scene is hazy, suggesting a misty or overcast day. The text is overlaid on a dark green semi-transparent box in the lower-left quadrant.

Limiting sprawl...

this is the smallest urban expansion in the Vaughan's history and allows Vaughan to maintain its Countryside.

An aerial photograph of a city, likely Chicago, showing a mix of urban development and green spaces. A large river, the Chicago River, winds through the center-left of the image. To the left of the river is a multi-lane highway. In the center, there are several large, modern multi-story buildings, some with flat roofs and others with more complex structures. To the right of these buildings is a residential area with smaller houses and apartment buildings. The background shows a vast expanse of green fields and more distant city structures under a clear sky.

Encouraging Intensification

...

45% of new development will be on underutilized sites in built-up areas, making better use of infrastructure.



Protecting existing communities

...

for a range of low-rise
housing types.



Building new mixed-use communities...

where people can
live, work, shop
and recreate.



Providing a
variety of
housing
options...

that meet the needs of
Vaughan citizens.

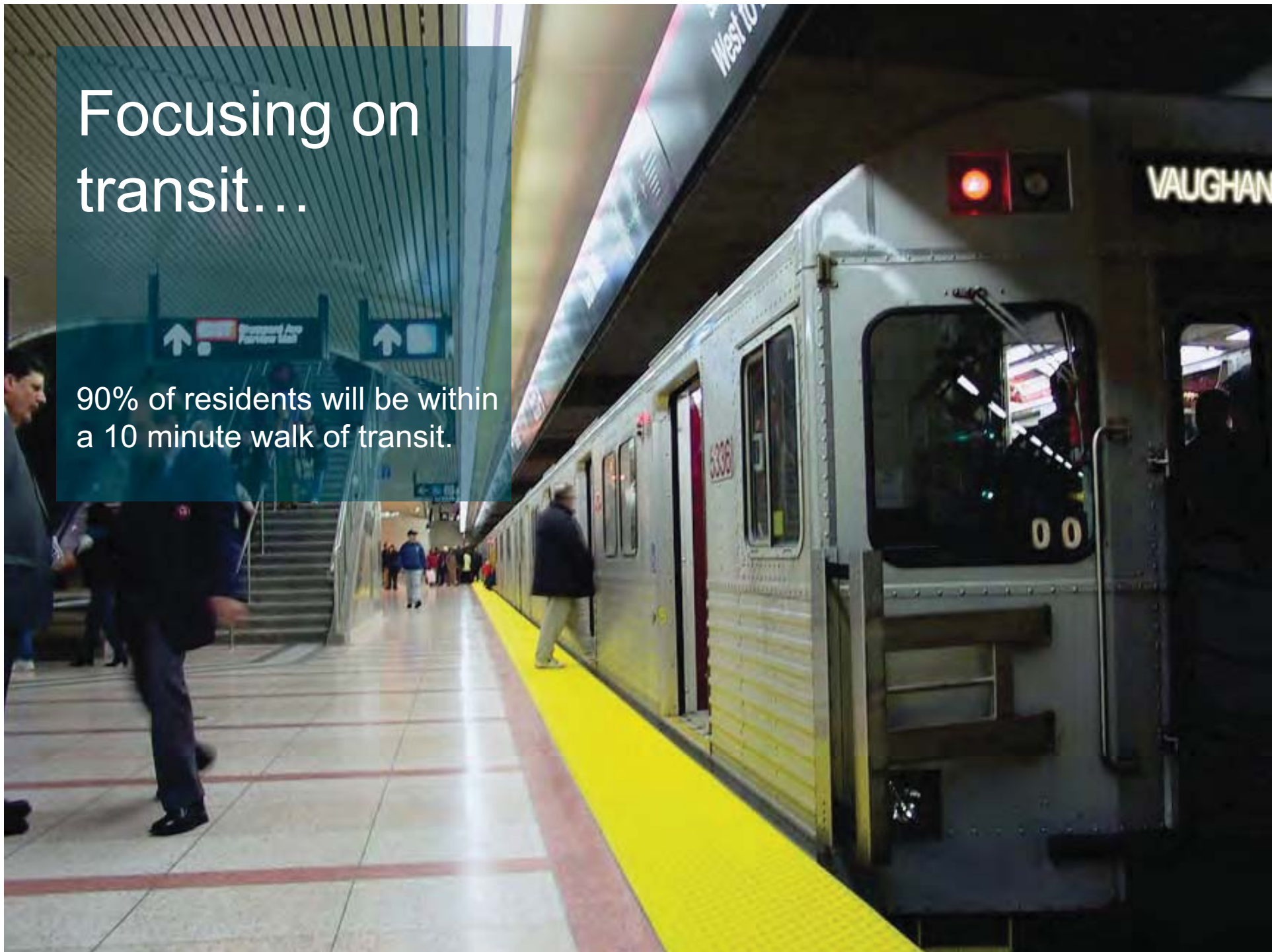


Creating jobs and economic growth...

through one of the largest
supplied of Employment Land
in the Great Golden
Horseshoe.

Focusing on transit...

90% of residents will be within a 10 minute walk of transit.





Supporting
walking and
cycling...

through better design and
municipal infrastructure.



Ensure great
design...

through civic spaces, public
art, a built form policies and
public review.



Requiring
green and
sustainable
buildings...

that incorporate a variety of
environmental features.



Encouraging local food production...

through protected
agricultural lands and urban
gardens.

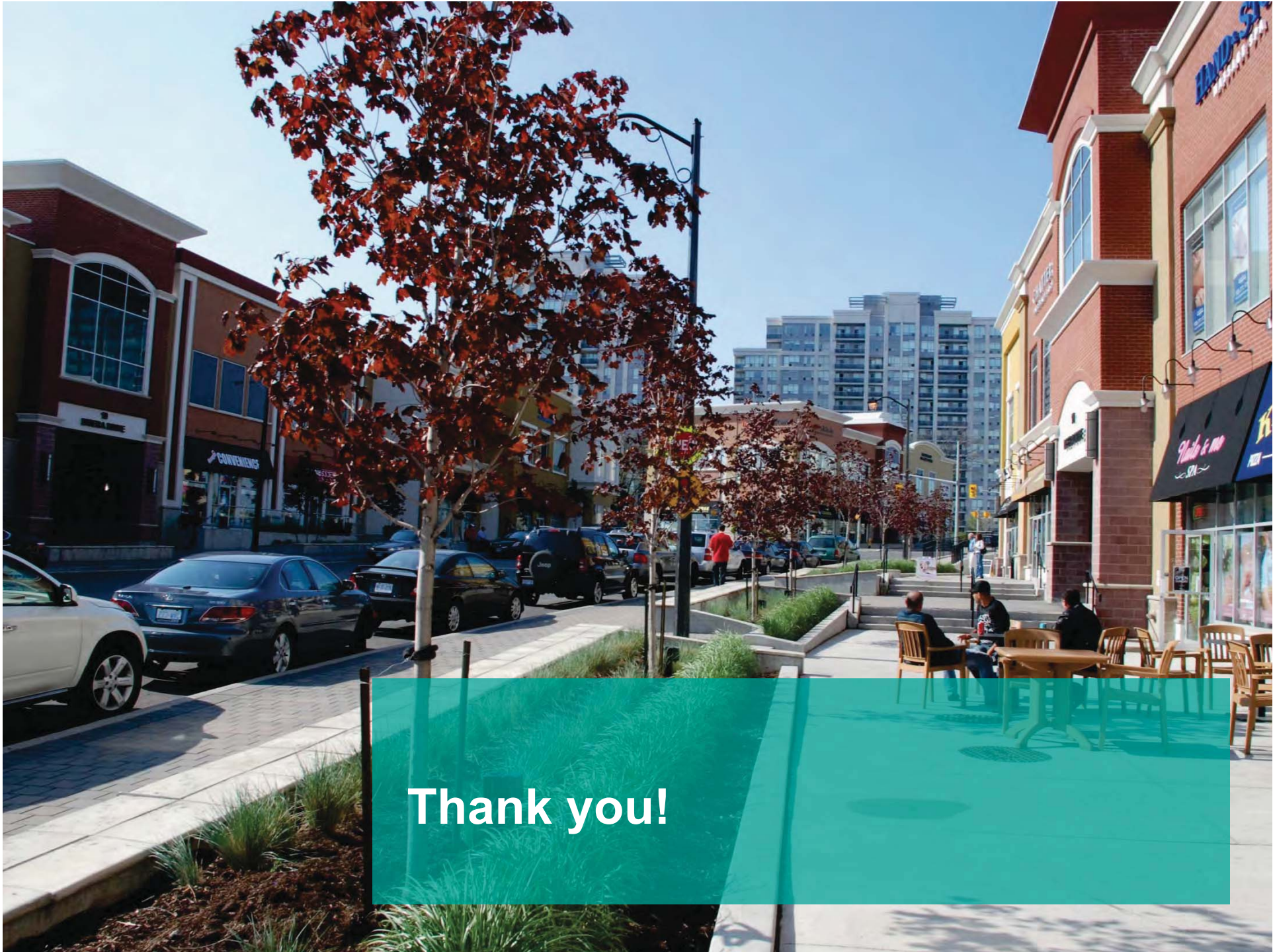
Meeting community and social service needs...

through new parks,
community facilities and better
access to social services.





**A Plan for Tomorrow...
and for Future Generations.**



Thank you!