

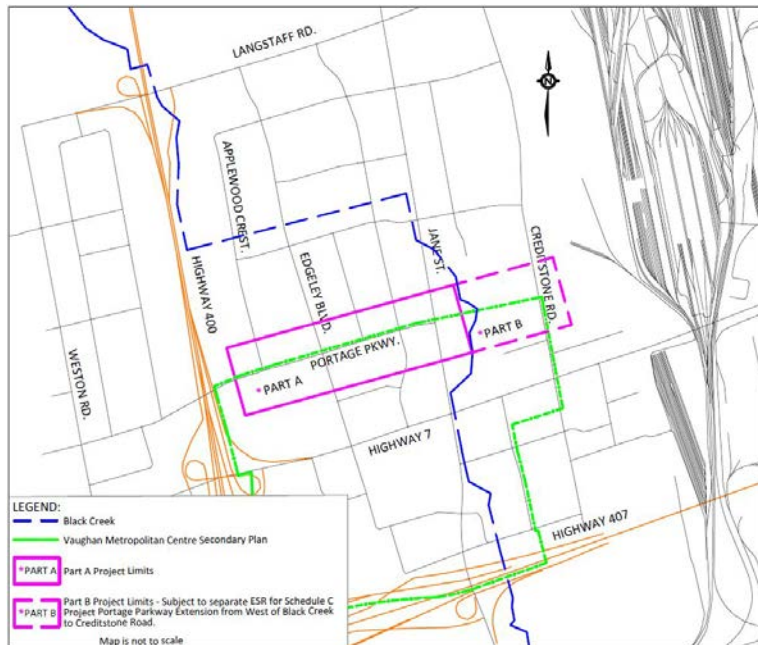
Notice of Completion Environmental Assessment Study

Portage Parkway Widening and Easterly Extension to West of Black Creek (Part A)

The City of Vaughan has completed the Class Environmental Assessment (Class EA) Study for the **Portage Parkway Widening and Easterly Extension to West of Black Creek (Part A)**. This Class EA Study, following the City's Transportation Master Plan – A New Path (2013), advances implementation of the Portage Parkway widening and easterly extension from Applewood Crescent to Creditstone Road, a strategic network improvement supporting the Vaughan Metropolitan Centre area.

STUDY PROCESS

The EA Study assessed the planned improvements to Portage Parkway from Applewood Crescent to West of Black Creek (Part A) and concurrently for the Portage Parkway Extension from West of Black Creek to Creditstone Road (Part B) as two interrelated parts, the project limits of which were refined through the study. The assessment has considered the technical, environmental, socio-economic and financial criteria in order to establish the preferred design alternative for the overall study (Parts A and B).



The EA Study assessed the planned improvements to Portage Parkway from Applewood Crescent to West of Black Creek (Part A) and concurrently for the Portage Parkway Extension from West of Black Creek to Creditstone Road (Part B) as two interrelated parts, the project limits of which were refined through the study. The assessment has considered the technical, environmental, socio-economic and financial criteria in order to establish the preferred design alternative for the overall study (Parts A and B).

This study was conducted as a Schedule “C” project following phases 1 through 4 of the Municipal Engineers Association “Municipal Class Environmental Assessment” (October 2000, as amended in 2007, 2011 and 2015). A problem statement, alternative solutions, and alternative design concepts were presented for review and comment at two Public Information Centres held on November 25, 2015 and March 9, 2016. Documentation for the interrelated Schedule C project for the Portage Parkway Extension from West of Black Creek to Creditstone Road (Part B) is the subject of a separate Environmental Study Report and future Notice of Completion.

ENVIRONMENTAL STUDY REPORT – PROJECT DESCRIPTION

The Environmental Study Report (ESR) documents the process and preferred design alternative for the **Portage Parkway Widening and Easterly Extension to West of Black Creek (Part A)** as a multi-modal street including the following key elements:

- widen and improve Portage Parkway to a 33 metre right-of way from Applewood Crescent to Jane Street including
 - active transportation facilities (cycle tracks and sidewalks)
 - 4 general purpose lanes (2 in each direction) with wider curb lanes facilitating transit vehicles and trucks
 - auxiliary centre/left turn lane
- extend Portage Parkway easterly from Jane Street to an interim terminus west of the Black Creek channel
- improvements to existing and future intersections including Applewood Crescent, Edgely Boulevard and at realigned Millway Avenue

An Environmental Study Report for the **Portage Parkway Widening and Easterly Extension to West of Black Creek (Part A)** will be available for public review from **July 15 to August 15, 2016** at the following locations during regular business hours and on the project website at:

http://www.vaughan.ca/projects/projects_and_studies/environmental_assessment_studies/Pages/Class-EA-Study-for-Portage-Parkway.aspx.

Vaughan City Hall Clerk's Department 2141 Major MacKenzie Drive Vaughan, ON L6A 1T1	Civic Centre Library Resource Centre 2191 Major MacKenzie Drive Vaughan, ON L6A 4W2	Ansley Grove Library 350 Ansley Grove Road Woodbridge, ON L4L 5C9
---	--	--

Any person or party with outstanding issues must submit their comments in writing to the City's Project Manager and/or CIMA's Project Manager within the review period, **July 15 to August 15, 2016**:

Marta Roias, RPP
City Project Manager
 City of Vaughan
 2141 Major Mackenzie Drive
 Vaughan, ON L6A 1T1
 Phone: 905-832-8585, Ext. 8026
 Fax: 905-832-6145
 Email: Marta.Roias@vaughan.ca

Stephen Keen, P.Eng.
Consultant Project Manager
 CIMA Canada Inc.
 3027 Harvester Road, Suite 400
 Burlington, ON L7N 3G7
 Phone: 289-288-0287, Ext. 6834
 Fax: 289-288-0285
 Email: Stephen.Keen@cima.ca

If the issue raised cannot be resolved with the City during the review period, the interested person or party may request the Minister of Environment and Climate Change to order the City to comply with Part II of the *Environmental Assessment Act* (Part II Order), which refers to individual environmental assessments. Requests for a Part II Order must be submitted to the Minister of Environment and Climate Change and a copy of the request must be received by the City's Project Manager and sent to the addresses below:

Minister of the Environment and Climate Change
Honorable Glen Murray
77 Wellesley St. West, 11th Floor
Toronto, ON M7A 2T5
Fax: 416 314 8452

Ministry of the Environment and Climate Change
Director, Environmental Approvals Branch
135 St. Clair Ave. West, 1st Floor
Toronto, ON M4V 1P5

If no Part II order requests are received by **August 15, 2016** the City will proceed to detail design and construction.

Information is being collected under the Freedom of Information and Protection of Privacy Act. With the exception of personal information, all comments will become part of the public record.

ANDREW PEARCE, Director, Development Engineering and Infrastructure Planning

This notice *first* issued **July 15, 2016**.